

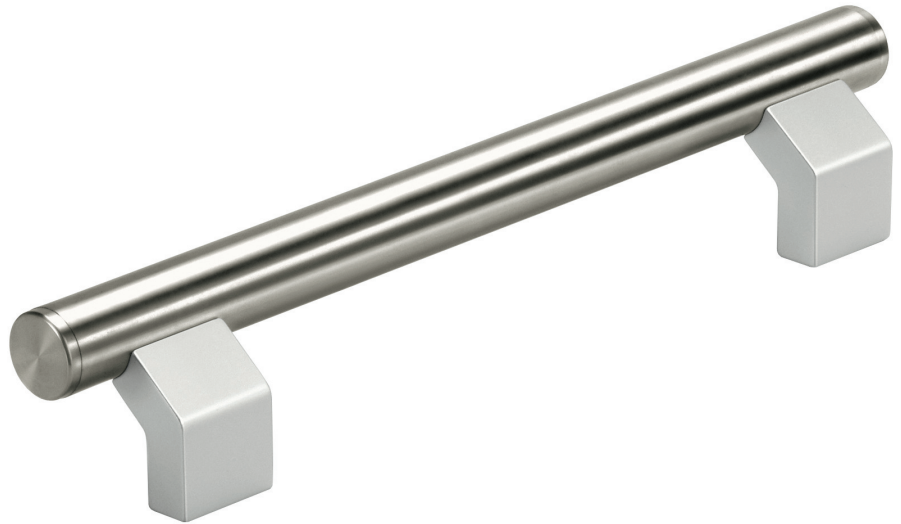
Griffserie TL.WR

Werkstoff und Oberfläche:
Edelstahl-Rohr, Werkstoff-Nr. 1.4301; feingeschliffen. Griff-schenkel aus stranggepresstem Aluminium AlMgSi 0,5; matt-glänzend, naturfarben eloxiert. Endkappe aus Rund-Edelstahl, Werkstoff-Nr. 1.4305; feinge-dreht.

Befestigungshülsen aus eloxier-tem Aluminium, Spanschrauben und -zapfen aus Edelstahl.

Tragkraft:
min. 1.000 N.

Hinweis:
Weitere Ausführungsarten s.a. unter Typenreihe WR, Seite 63.



Handle Series TL.WR

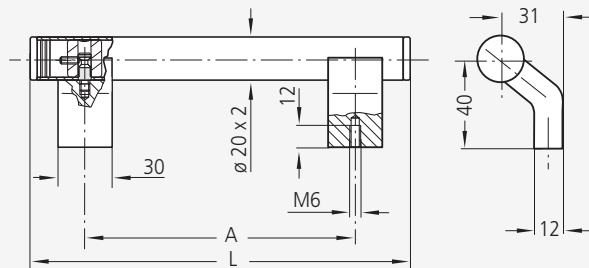
Material and surface:
Stainless steel tube, material no. 1.4301; fine ground. Handle shanks of extruded aluminium AlMgSi 0.5; natural colour anodized with dull bright finish. End caps of stainless steel, material no. 1.4305; fine lathed.

Fixing sleeves of anodized aluminium, clamping screws and pegs of stainless steel.

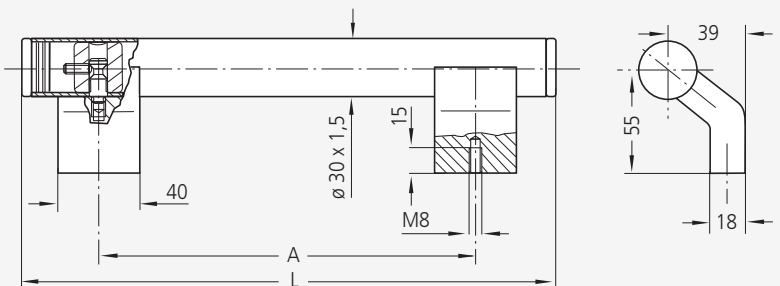
Stress resistance:
min. 1.000 N.

Note:
For other versions see also type series WR on page 63.

Typ TL.WR-20



Typ TL.WR-30



\varnothing	A	L	Bestell-Nr. Order no.
20	200	260	TL.WR-20.200.37
	250	310	TL.WR-20.250.37
	300	360	TL.WR-20.300.37
30	300	390	TL.WR-30.300.37
	350	440	TL.WR-30.350.37
	400	490	TL.WR-30.400.37
	500	590	TL.WR-30.500.37
	600	690	TL.WR-30.600.37